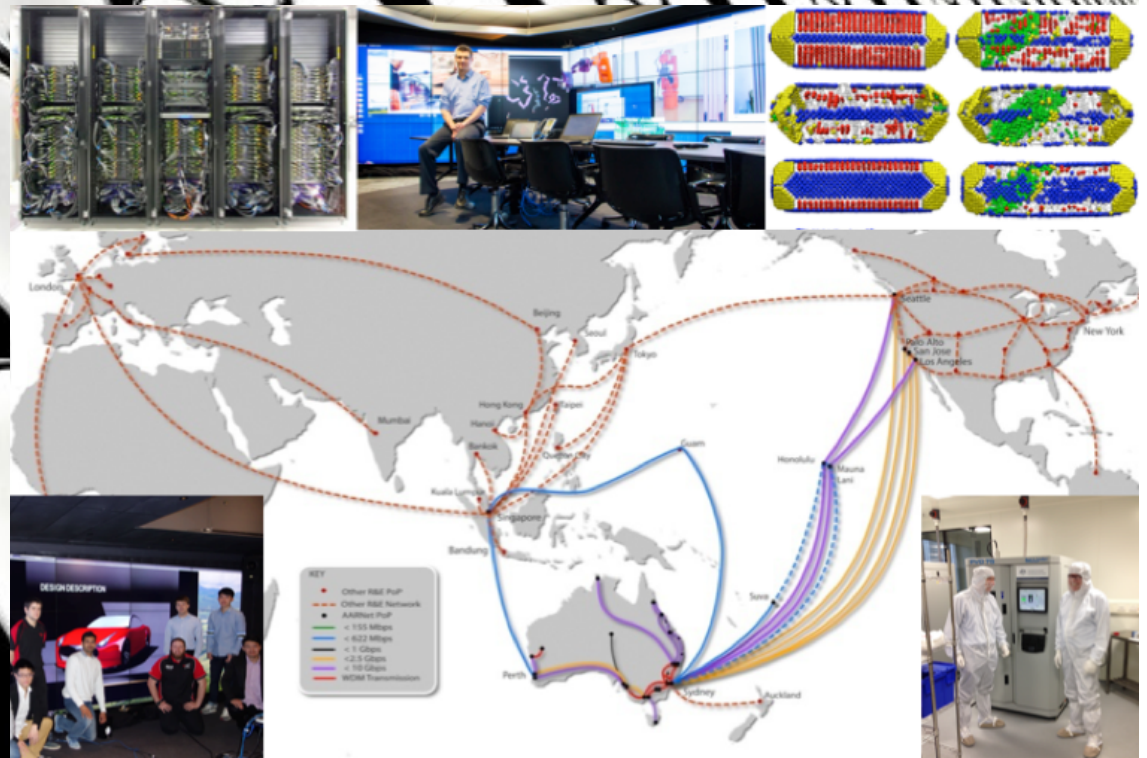


# eResearch @ RMIT

Transforming global research  
collaboration, technology and process,  
through advanced infrastructure and software

Heinz Schmidt

Overview  
Q&A





@RMIT eResearch is not IT service; but focus:-

- digital transformation of research
- access and barriers to shared platforms and data elsewhere
- novel tech diffusion inbound
- embedded help with translation/demos

**Governance, budgeting & planning:** *under DVCR*; beside eResearch Director, Office and Tech eResearch existing for over 5y, for example partner shares in NCI, VLSCI and co-investment in NeCTAR infrastructure at Monash funded by DVCR

**Enterprise architecture: in triangle** Library - IT Services - Researchers/Labs; represented in eResearch steering committee, joint projects, processes & systems

**Culture: researcher-facing & research-aware** (staff with PhD or part-time PhD students); cross-disciplinary and embedded in research projects complementing services divisions

**Future Change:** 4 existing institutes transforming into **8 Enabling Capabilities** with eResearch cross-cutting them: multi-disciplinary, open, flexible groupings sharing translation opportunities/risks, selected tech skills and industry networks





@RMIT eResearch is not IT service; but focus:-

- digital transformation of research
- access and barriers to shared platforms and data elsewhere
- novel tech diffusion inbound
- embedded help with translation/demos

**Governance, budgeting & planning:** *under DVCR*; beside eResearch Director, Office and Tech eResearch existing for over 5y, for example partner shares in NCI, VLSCI and co-investment in NeCTAR infrastructure at Monash funded by DVCR

Q1

**Enterprise architecture: in triangle** Library - IT Services - Researchers/Labs; represented in eResearch steering committee, joint projects, processes & systems

**Culture: researcher-facing & research-aware** (staff with PhD or part-time PhD students); cross-disciplinary and embedded in research projects complementing services divisions

**Future Change:** 4 existing institutes transforming into **8 Enabling Capabilities** with eResearch cross-cutting them: multi-disciplinary, open, flexible groupings sharing translation opportunities/risks, selected tech skills and industry networks



@RMIT eResearch is not IT service; but focus:-

- digital transformation of research
- access and barriers to shared platforms and data elsewhere
- novel tech diffusion inbound
- embedded help with translation/demos

**Governance, budgeting & planning:** *under DVCR*; beside eResearch Director, Office and Tech eResearch existing for over 5y, for example partner shares in NCI, VLSCI and co-investment in NeCTAR infrastructure at Monash funded by DVCR

Q1

**Enterprise architecture: in triangle** Library - IT Services - Researchers/Labs; represented in eResearch steering committee, joint projects, processes & systems

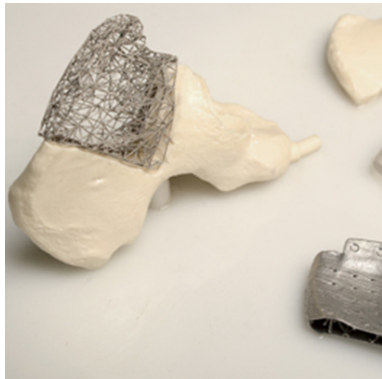
**Culture: researcher-facing & research-aware** (staff with PhD or part-time PhD students); cross-disciplinary and embedded in research projects complementing services divisions

**Future Change:** 4 existing institutes transforming into **8 Enabling Capabilities** with eResearch cross-cutting them: multi-disciplinary, open, flexible groupings sharing translation opportunities/risks, selected tech skills and industry networks

Q2



# Enabling capability platform identified



Advanced  
manufacturing and  
fabrication



Advanced materials



Biomedical and  
health innovation



Design and creative  
practice



Global business  
innovation



Information and  
systems engineering



Social change

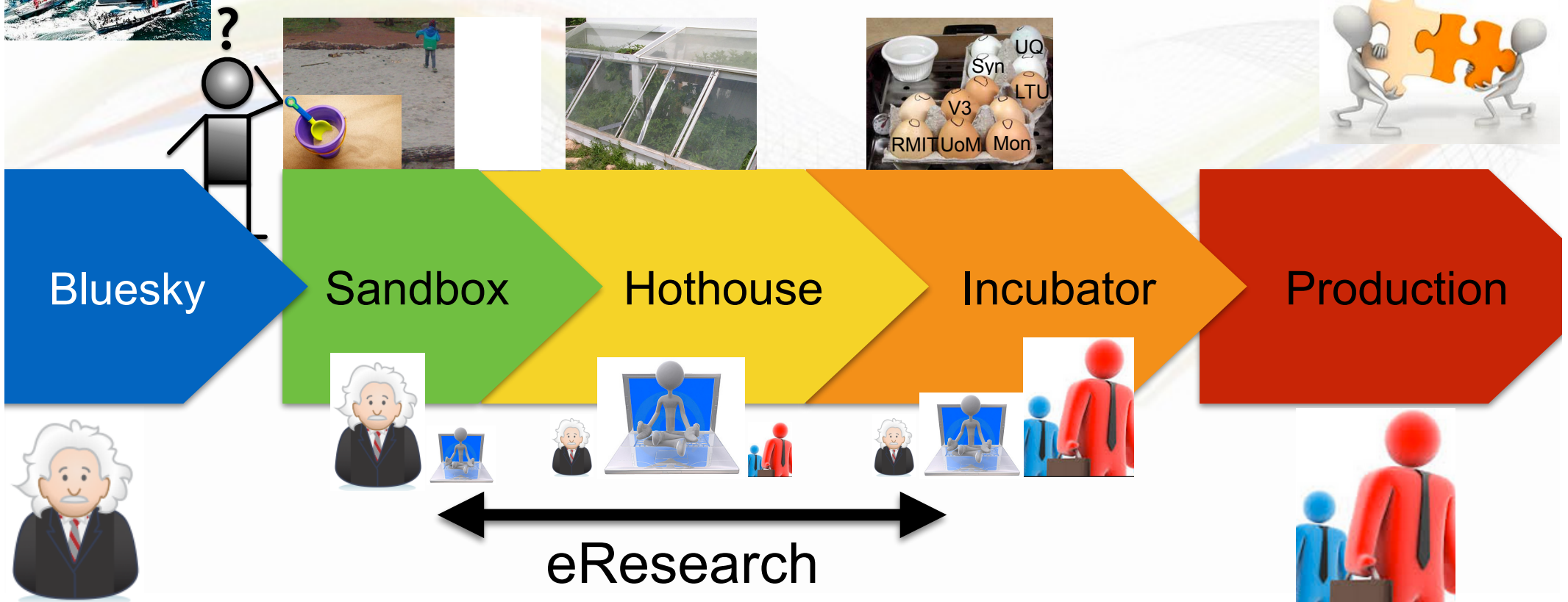
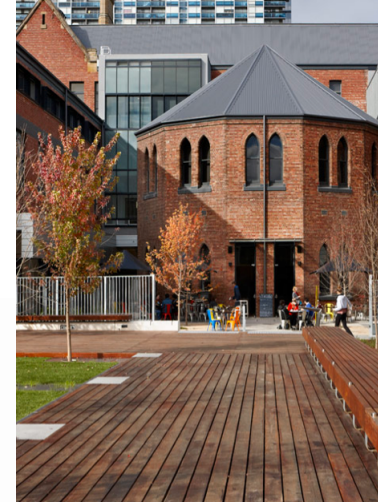


Urban futures



# Project-Driven eResearch: Research Acceleration by Innovation

- Beside minor and major infrastructure projects
- Pipeline of smaller eResearch trial and pilot projects with **priorities and gate review process**
- Leveraging shared infrastructure investment
- Triggered by **grants and attracting investment**



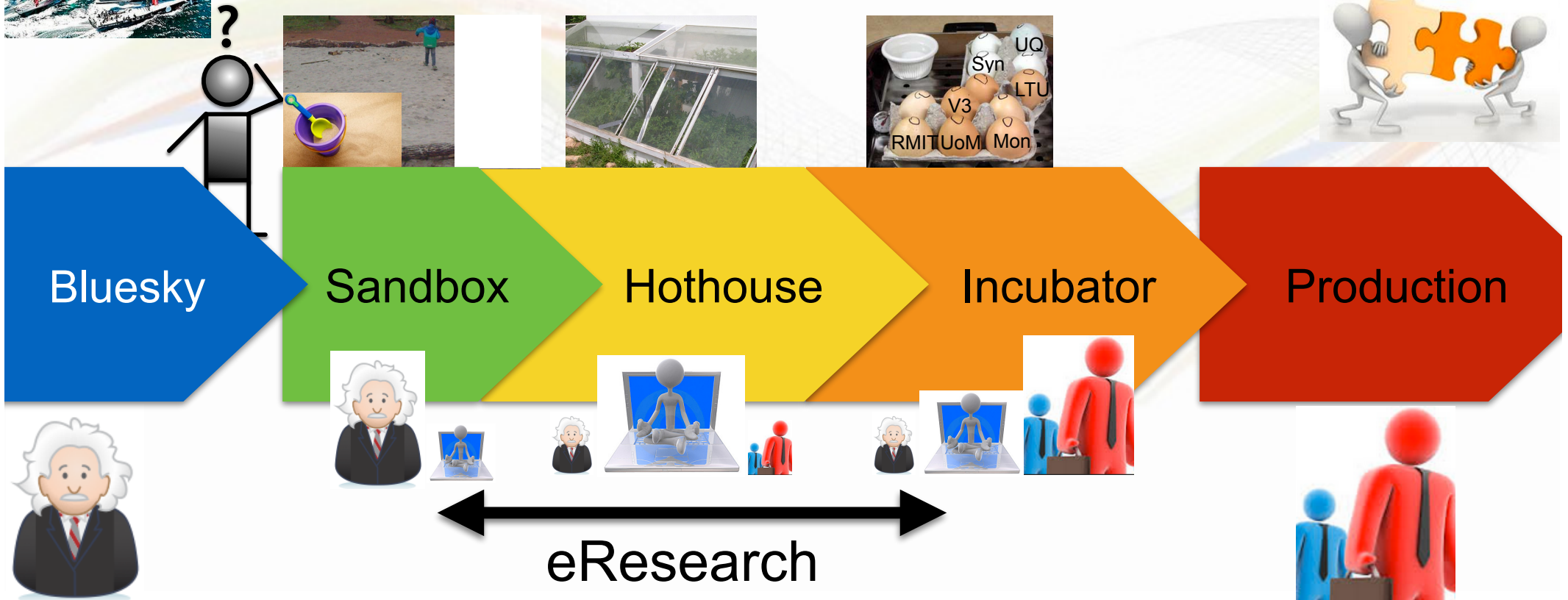
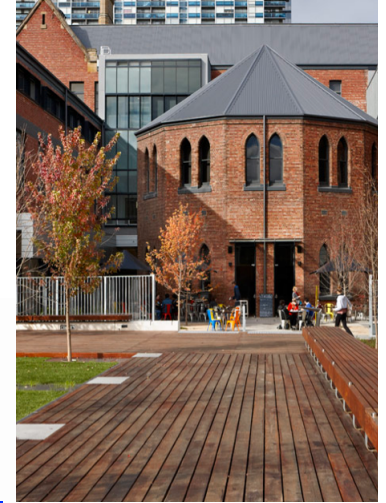


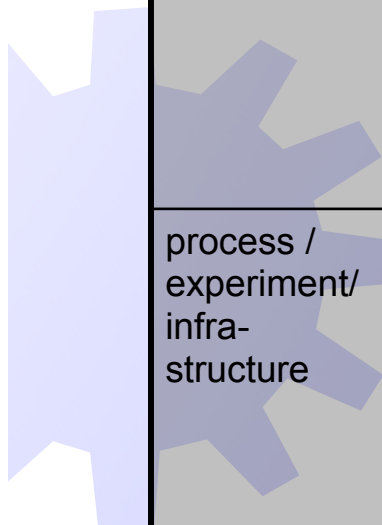
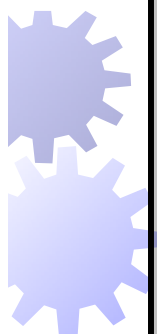


# Project-Driven eResearch: Research Acceleration by Innovation

- Beside minor and major infrastructure projects
- Pipeline of smaller eResearch trial and pilot projects with **priorities and gate review process**
- Leveraging shared infrastructure investment
- Triggered by **grants and attracting investment**

Q3





e/Research	competitive	shared [& optout open]	collaborative [& optout open]
data / evidence	intra-RMIT: GDrive, NetApp  ITS & Library	Dropbox, ?GDrive  	Cloudstor+, RDS 
software / method	intra-RMIT: MyTardis instances, software licences home-grown algorithms  ITS & Colleges: lab/community specific 	Github, Bitbucket 	  Github, Jira, ...  
process / experiment/ infrastructure	RMIT Research Store (PB) RMIT Research Catalog (Redbox)  ITS & Library	LIEF, NCI, VLSCI, Chimney connectors from/to MyTardis  	  NeCTAR VLs RDA/ARDC
expertise / skills	RMIT ITS & Library & Schools	Partnerships: FAVeR, ...	ANDS, NeCTAR, RDA,...



e/Research	competitive	shared [& optout open]	collaborative [& optout open]
data / evidence	intra-RMIT: GDrive, NetApp  ITS & Library	Dropbox, ?GDrive 	Cloudstor+, RDS 
software / method	intra-RMIT: MyTardis instances, software licences home-grown algorithms  ITS & Colleges: lab/community specific	Github, Bitbucket 	Github, Jira 
process / experiment/ infrastructure	RMIT Research Store (PB) RMIT Research Catalog (Redbox)  ITS & Library	LIEP, NCI, VLSCI, Genome Connectors from MyTardis 	NeCTAR VLs RDA/ARDC 
expertise / skills	RMIT ITS & Library & Schools	Partnerships: FAVeR, ...	ANDS, NeCTAR, RDA,...

Q4

Q5

Q6

RMIT eResearch in Ecosystem  
 - over \$2m grants  
 - major partnerships  
 - FAVeR communities  
 - Platform communities  
 - eResearch learnings hard to train and sustain  
 - culture, processes and canary role